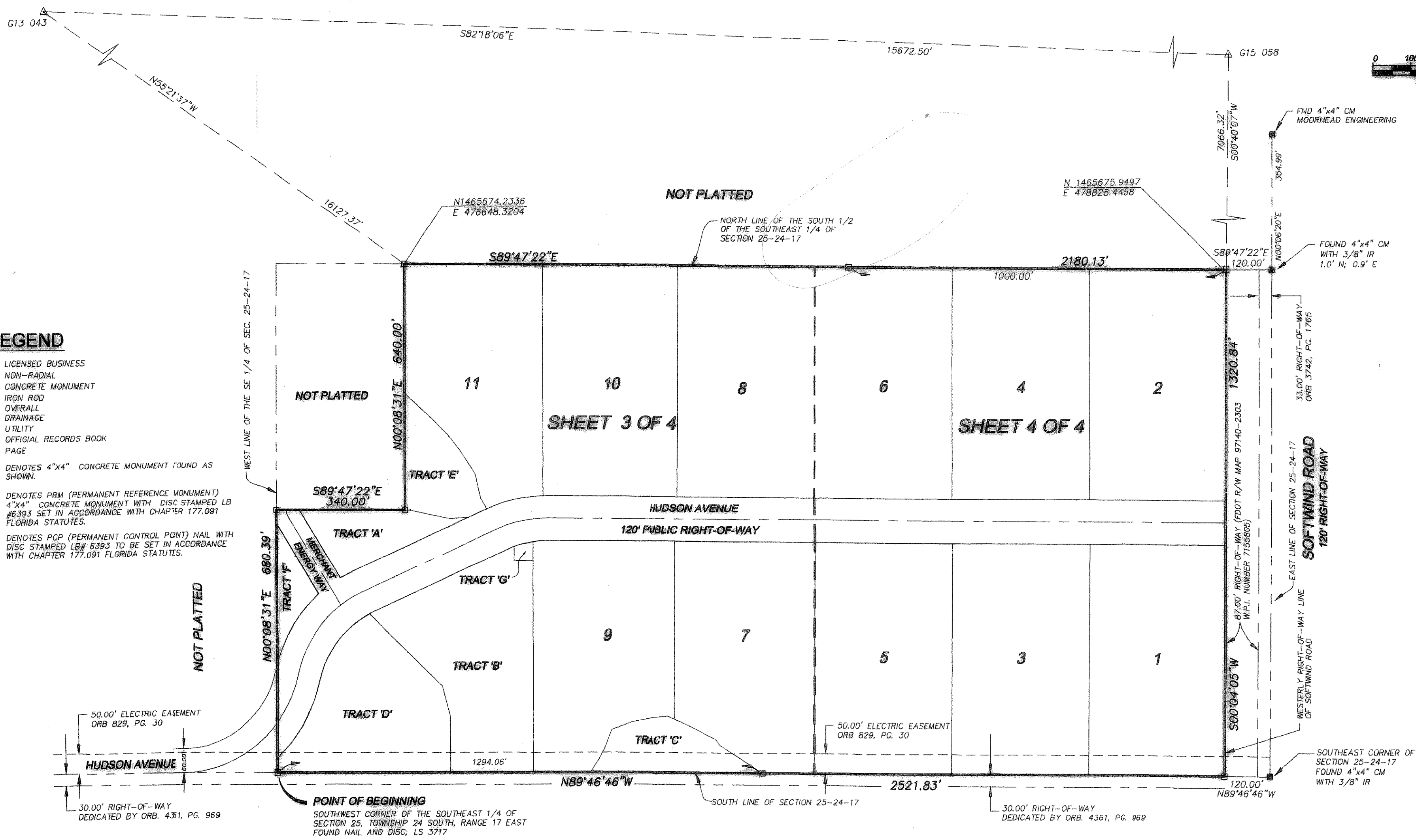


NORTH SUNCOAST INDUSTRIAL PARK

SHEET 2 OF 4

PLAT BOOK 58 PAGE 2

A PORTION OF SECTION 25, TOWNSHIP 24 SOUTH, RANGE 17 EAST
PASCO COUNTY, FLORIDA

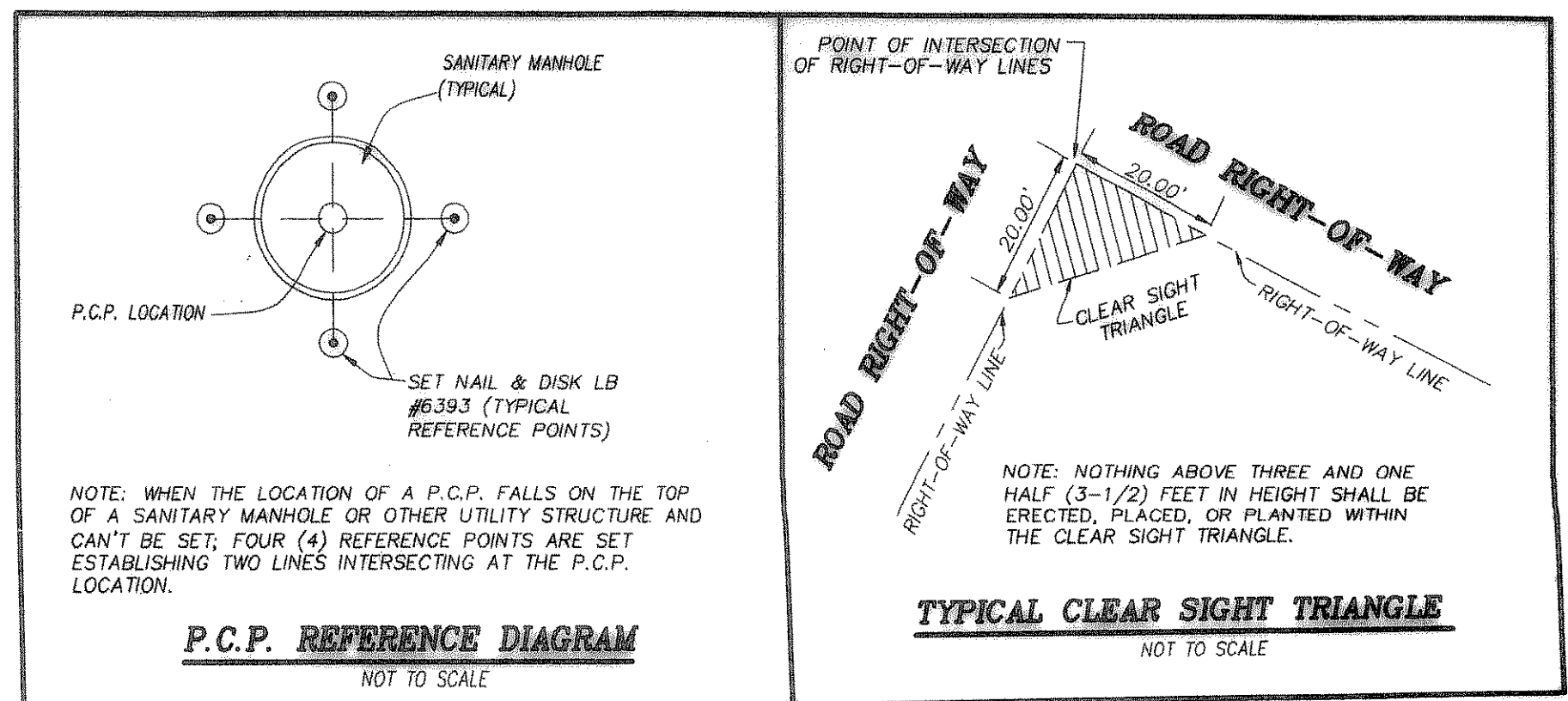


LEGEND

- LB LICENSED BUSINESS
- (NR) NON-RADIAL
- CM CONCRETE MONUMENT
- IR IRON ROD
- (DA) OVERALL
- DRAIN DRAINAGE
- UTIL. UTILITY
- ORB OFFICIAL RECORDS BOOK
- PG PAGE
- DENOTES 4"x4" CONCRETE MONUMENT FOUND AS SHOWN.
- DENOTES PRM (PERMANENT REFERENCE MONUMENT) 4"x4" CONCRETE MONUMENT WITH DISC STAMPED LB #6393 SET IN ACCORDANCE WITH CHAPTER 177.091 FLORIDA STATUTES.
- DENOTES PCP (PERMANENT CONTROL POINT) NAIL WITH DISC STAMPED LB# 6393 TO BE SET IN ACCORDANCE WITH CHAPTER 177.091 FLORIDA STATUTES.

GENERAL NOTES:

1. THE BEARINGS SHOWN HEREON ARE BASED ON THE WEST RIGHT-OF-WAY LINE OF SOFTWIND ROAD, BEING SOUTH 00°04'05" WEST AN ASSUMED BEARING.
2. THE COORDINATE VALUES SHOWN HEREON ARE BASED ON THE PASCO COUNTY PRIMARY HORIZONTAL CONTROL NETWORK AND WERE ESTABLISHED TO THIRD ORDER CLASS I ACCURACY AS DEFINED BY THE STANDARDS AND SPECIFICATIONS FOR GEODETIC CONTROL NETWORKS, AS PUBLISHED BY THE FEDERAL GEODETIC COMMITTEE DATED SEPTEMBER 1984 OR LATEST EDITION.
3. WETLAND CONSERVATION AREAS AS SHOWN HEREON MAY BE SUBJECT TO CERTAIN RESTRICTIONS FOUND IN: PASCO COUNTY LAND DEVELOPMENT CODE, SOUTHWEST FLORIDA WATER MANAGEMENT DISTRICT (S.W.F.W.M.D.) ENVIRONMENTAL RESOURCE PERMIT, AND/OR THE UNITED STATES ARMY CORPS OF ENGINEERS (C.O.E.) PERMIT.
4. ALL UTILITY EASEMENTS SHOWN HEREON SHALL ALSO BE EASEMENTS FOR CONSTRUCTION, INSTALLATION, MAINTENANCE, AND OPERATION OF CABLE TELEVISION SERVICES; PROVIDED, HOWEVER, NO SUCH CONSTRUCTION, INSTALLATION, MAINTENANCE, AND OPERATION OF CABLE TELEVISION SERVICES SHALL INTERFERE WITH THE FACILITIES AND SERVICES OF AN ELECTRIC, TELEPHONE, GAS, OR OTHER PUBLIC UTILITY. IN THE EVENT A CABLE TELEVISION COMPANY DAMAGES THE FACILITIES OF A PUBLIC UTILITY, IT SHALL BE SOLELY RESPONSIBLE FOR THE DAMAGES.
5. ALL LINES ARE RADIAL UNLESS SHOWN AS NON-RADIAL (NR).
6. AN IRON ROD AND CAP (LB #6393) WILL BE SET AT EACH LOT CORNER, POINTS OF INTERSECTION AND CHANGES OF DIRECTION OF LINES WITHIN THE SUBDIVISION AS REQUIRED BY CHAPTER 177 OF THE FLORIDA STATUTES WITHIN THE TIME ALLOTTED IN s.177.091(9).



SP1425-NORTH-SUNCOAST INDUSTRIAL PARK-PASCO-NORTH-SUNCOAST INDUSTRIAL PARK-SHEET 2-OF-4-11/22/05 11:03:07 AM